



Expansion joint element GEOTEC® A / GEOFLAM®

FIRE RESISTANT ACCESSORIES



Ventilation

EN 1366-1



Smoke extraction

EN 1366-8



Fire protection services

EN 1366-5



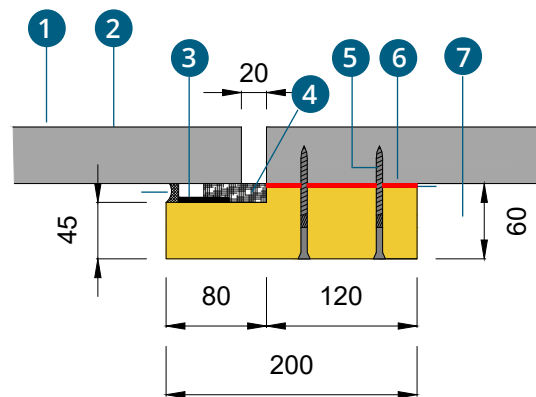
Fire-protection up to 2 hours



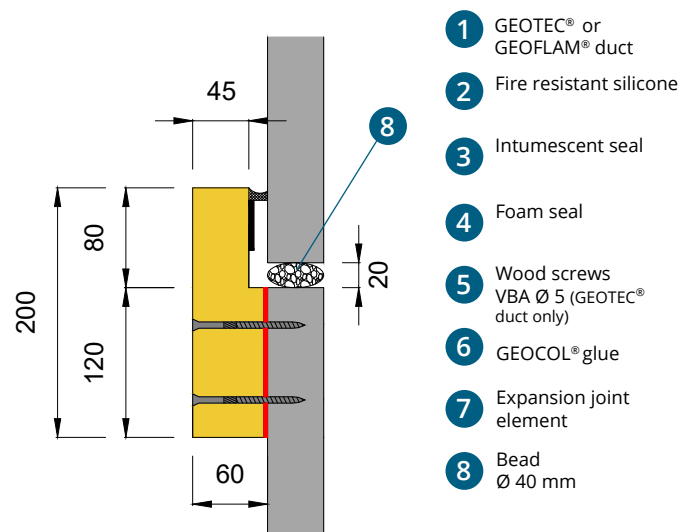
Silicate-free plaster-based product

EI 30 - 60 (S) / EI 90 - 120 (S)
30 to 120 minutes fire-resistant

Application in a horizontal duct



Application in a vertical duct



- 1 GEOTEC® or GEOFLAM® duct
- 2 Fire resistant silicone
- 3 Intumescent seal
- 4 Foam seal
- 5 Wood screws VBA Ø 5 (GEOTEC® duct only)
- 6 GEOCOL® glue
- 7 Expansion joint element
- 8 Bead Ø 40 mm

In the case of a GEOFLAM® duct, use fiber reinforced gypsum instead of wood screws.

FIRE-RESISTANT ACCESSORIES

The expansion joint elements are pre-moulded gypsum and fibreglass elements of 1.50 ml, glued to the perimeter of the ducts and used as a presser for the insertion of foam and intumescent joints, in order to take up the various movements of the construction.

Advantages

- ✓ Silicate-free product
- ✓ Possible application of water-based acrylic paint
- ✓ Easy cutting with a circular saw, sabre saw or handsaw
- ✓ Possible application of a water-repellent treatment that does not modify the fire resistance performance

✓ Element sold in kit including :

- 1- Plaster press (Length 1,50 ml)
- 2- Intumescent seal (40 x 4 mm - Length 1,50 ml)
- 3- Foam gasket (50 x 40 mm - Length 1,50 ml)
- 4- Silicone cartridge (310 ml)

Installations



Glue GEOCOL® + screws



Mixture of GEOPLÂTRE® N and sisal fiber

Applications

- For installation on GEOTEC® or GEOFLAM® ducts in line with the expansion joints of concrete structures.

Dimensions

| Thickness (mm) | EI (mm) | Length (m) | Width (mm) |
|----------------|-----------|------------|------------|
| 60 | 30 to 120 | 1,5 | 200 |

*E = Flame and hot gas tightness
I = Thermal insulation*

The data in this table are average values, given for information only. If certain properties are essential for some particular application, we should preferably be consulted.

Transport and storage

Transport and store on a flat, protected surface (out of water).

Classification and tests

✓ Certified according to the fire resistance test standards:

EN 1366-1
EN 1366-5
EN 1366-8

✓ Certified according to the fire resistance classification standards:

EN 13501-2
EN 13501-3
EN 13501-4

Technical documents available

Technical data sheet

Items codes

| Reference | Water repellent | Name | Packaging |
|-----------|-----------------|-------------------------------|-----------------|
| JLD0002 | JDLH002 | Expansion joint kit - 1,50 ml | Kit of 18,50 kg |

 GEOTEC® range  GEOFLAM® range

Geostaff has collected the data in this sheet with all due care and reserves the right to modify the properties of the products without prior notice. The user of these data will be responsible at all times for their correct application. In case of uncertainty or doubt, we advise you to contact Geostaff in order to verify if these data correspond to the required application.

Expansion joint element

FIRE RESISTANT ACCESSORIES



www.geostaff.fr/en