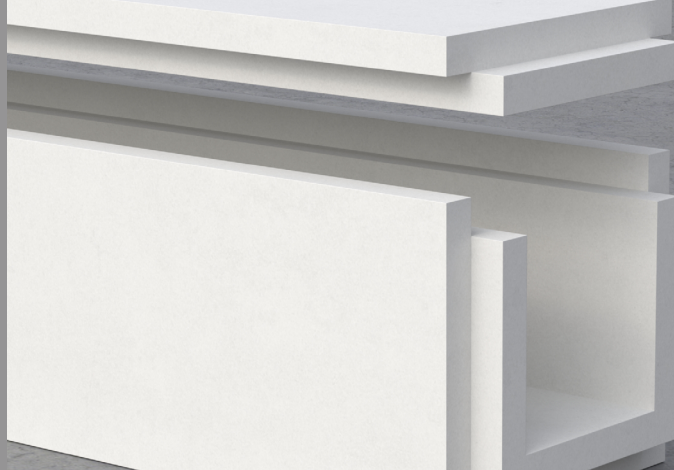




GEOFLAM® C-Light

PREFABRICATED CHANNEL



Ventilation



Smoke extraction



Fire protection services



Fire-protection up to 2 hours



Silicate-free plaster-based product

PREFABRICATED CHANNEL

GEOFLAM® C Light channels are 35 mm thick pre-moulded non-combustible elements, specially designed for the installation of technical ducts such as gas pipes, medical fluids and various pipes. In some cases, our channels can also be used for smoke extraction and ventilation ducts.

The channels are manufactured with longitudinal and end rabbets allowing them to be fitted together, for quick and easy installation on site.

Advantages

- ✓ Pre-moulded product with a cover for quick installation on site
- ✓ Silicate-free product
- ✓ Can be painted with water-based acrylic paint
- ✓ Can easily be cut with a circular saw, sabre saw or hand saw
- ✓ Wide range of sizes
- ✓ Meets environmental, health and safety standards

Installations



Glue
[50 x 50 mm to 350 x 200 mm] *
** limit of the internal section of the enclosure*



Mixture of GEOPLÂTRE® N and sisal fiber
In certain configurations, this application is recommended. Please consult us.

Transport and storage

Transport and store on a flat, protected surface (out of water).

Applications

- Fire protection services (various pipes, gas pipes, medical fluids, etc.)
- Protection of electrical cable trays up to a fire exposure time of EI 120 (2h)
- Creation of smoke extraction and ventilation ducts (different assembly principle: please consult us).

Certifications



Classification A1 according to EN 13501-1



Product classified A+ (VOC emission to indoor air)

Classification and tests

- ✓ Certified according to the fire resistance test standards:

EN 1366-1
EN 1366-5
EN 1366-8

- ✓ Certified according to the fire resistance classification standards:

EN 13501-1
EN 13501-2
EN 13501-3
EN 13501-4

Technical documents available

- ✓ Technical data sheet
- ✓ Environmental and health declaration form being renewed

Dimensions				
Thickness (mm)	EI (mm)	Length (ml)	Internal dimensions (l x L) (mm)	Dry weight* (kg/m ²)
35	120	1	50 x 50	16
			100 x 50	20
			100 x 100	24
			150 x 100	28
			150 x 150	32,50
			200 x 100	32,50
			200 x 200	40,50
			300 x 100	41
			350 x 200	53

E = Flame and hot gas tightness

I = Thermal insulation

** Dry weight : prefabricated channel + cover*

The data in this table are average values, given for information only. If certain properties are essential for some particular application, we should preferably be consulted.

Characteristics	
Nominal density (± 15 %)	± 1100 kg/m ³
Bending strength	≥ 1,8 MPa
Compressive strength	≥ 5 MPa
pH value	± 8,9
Thermal conductivity coeff (λ at 20°C)	0,60 W/m.K
Resistance to water vapour diffusion (μ)	± 3,8 for standards boards
Cold sealing class	D
Dimensional tolerance	± 5 mm
Thickness tolerance	± 2 mm
Colour	White
Appearance	Smooth
Cutting and machinability	Good

Items codes			
Reference	Name	Packaging	Gross weight / pallet
KCL0001	Channel + Cover - int.dim. 50 x 50 mm	60 Units/pallet	980 kg
KCL0002	Channel + Cover - int.dim. 100 x 50 mm	60 Units/pallet	1210 kg
KCL0003	Channel + Cover - int.dim. 100 x 100 mm	45 Units/pallet	1090 kg
KCL0004	Channel + Cover - int.dim. 150 x 100 mm	36 Units/pallet	1020 kg
KCL0005	Channel + Cover - int.dim. 150 x 150 mm	28 Units/pallet	920 kg
KCL0006	Channel + Cover - int.dim. 200 x 100 mm	24 Units/pallet	790 kg
KCL0008	Channel + Cover - int.dim. 200 x 200 mm	15 Units/pallet	620 kg
KCL0011	Channel + Cover - int.dim. 300 x 100 mm	14 Units/pallet	585 kg
KCL0015	Channel + Cover - int.dim. 350 x 200 mm	10 Units/pallet	540 kg

Geostaff has collected the data in this sheet with all due care and reserves the right to modify the properties of the products without prior notice. The user of these data will be responsible at all times for their correct application. In case of uncertainty or doubt, we advise you to contact Geostaff in order to verify if these data correspond to the required application.

GEOFLAM®
C-Light

PREFABRICATED CHANNEL



www.geostaff.fr/en