



Half collar GEOTEC® A

FIRE RESISTANT ACCESSORIES



Fire protection services



Fire-protection up to 2 hours



Silicate-free plaster-based product

FIRE-RESISTANT ACCESSORIES

The GEOTEC® A half reinforcement collar, which are mainly made of gypsum and fibreglass, are used to fix GEOTEC® S boards in the installation of 1, 2 or 3-sided technical ducts. The elements can be installed on the inside or outside of the ductwork.

Advantages

- ✓ Silicate-free product
- ✓ Possible application of water-based acrylic paint
- ✓ Easy cutting with a circular saw, sabre saw or handsaw
- ✓ Possible application of a water-repellent treatment that does not modify the fire resistance performance
- ✓ Meets environmental, health and safety standards

Installations



GEOCOL® glue + screws

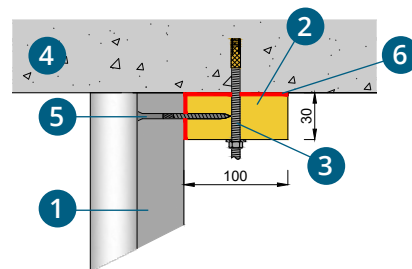


Mixture of GEOPLÂTRE® N and sisal fiber

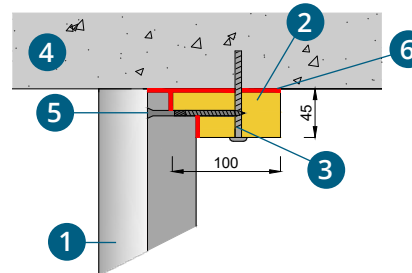
Applications

- Fire protection services

Use for horizontal service ducts

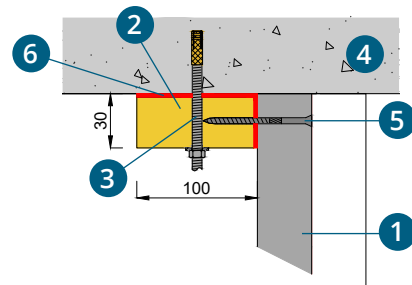


EI 30 - 60 (S) - 30 min to 1 hr fire-resistant

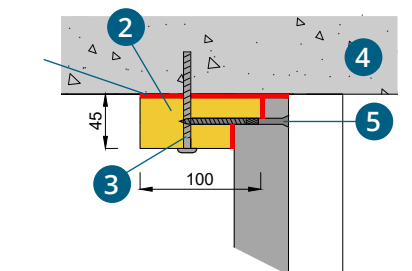


EI 90 - 120 (S) - 90 min to 2 hrs fire-resistant

Use for vertical service ducts



EI 30 - 60 (S) - 30 min to 1 hr fire-resistant



EI 90 - 120 (S) - 90 min to 2 hrs fire-resistant

- 1 GEOTEC® service duct
- 2 GEOTEC® A half collar
- 3 Mechanical fixation
- 4 Supporting construction
- 5 Woodscrews VBA Ø 5
- 6 GEOCOL® glue

Dimensions

Duct thickness (mm)	Thickness of the element (mm)	EI (mm)	Length (ml)	Height (mm)
30		60	1	200
45		120		

*E = Flame and hot gas tightness
I = Thermal insulation*

The data in this table are average values, given for information only. If certain properties are essential for some particular application, we should preferably be consulted.

Transport and storage

Transport and store on a flat, protected surface (out of water).

Classification and tests

✓ Certified according to the fire resistance test standards:
EN 1366-5

✓ Certified according to the fire resistance classification standards:
EN 13501-2

Technical documents available

Technical data sheet

Items codes

Reference	Water repellent	Name	Packaging	Gross weight / pallet
TAL0012	TALH012	Half collar 30 mm - 1,00 x 0,10 m	Unit	2,700 kg
TAL0014	TALH014	Half collar 45 mm - 1,00 x 0,10 m	Unit	-

 GEOTEC® range

Geostaff has collected the data in this sheet with all due care and reserves the right to modify the properties of the products without prior notice. The user of these data will be responsible at all times for their correct application. In case of uncertainty or doubt, we advise you to contact Geostaff in order to verify if these data correspond to the required application.

Half collar GEOTEC® A

FIRE RESISTANT ACCESSORIES



www.geostaff.fr/en