

OUR PRODUCTS

French producer of 100% natural fire protection products, Geostaff offers, through its GEOTEC® and GEOFLAM® ranges, various models and sizes of 1- to 3-hour fire protection boards, as well as a wide selection of fire-resistant components and accessories needed to install all your Geostaff systems.



GEOTEC® and GEOFLAM® fire-resistant boards enable you to create horizontal and vertical ventilation and smoke extraction ducts rated EI 60 to EI 240; build 2-hour fire protection enclosures; protect bonded carbon reinforcement; and protect cable trays.

The **GEOFLAM® C-Light channel** is a prefabricated element with a cover attached. It is used for service enclosures: gas pipes, electrical installations, medical fluids, etc. The prefabricated nature of this solution allows for quick and flexible installation in different dimensions.

Protect your metal posts with **GEOFLAM® DC half-shells**. Our half-shells offer you a proven solution for protecting metal or cast iron structures and ensuring their stability in the event of a fire.

Our **fire protection accessories** are made from the same materials as our fire protection boards and are used in the installation of our products (internal duct reinforcement, hanger protection, expansion joint treatment, floor penetration treatment, caulking, etc.).

TECHNICAL ADVANTAGES

- ✓ Effective fire protection: up to 4 hours EI 60 at 240.
- ✓ Products tested and classified as A1 according to current European standards: EN 13501-2; 13501-3; EN 13501-4.
- ✓ CE marking of fire-resistant boards and declaration of performance of available products.
- ✓ Quick and economical installation (pre-molded boards in standard sizes, minimal cutting, minimal waste).
- ✓ Silicate-free products that do not generate silica dust when cut.
- ✓ Wide range of plate sizes.

PROTECTING YOU FROM FIRE IS NATURAL TO US



WHO ARE WE?

For 40 years, Geostaff has been developing fire-resistant products made from glass-reinforced gypsum (GRG) that enable the creation of passive fire protection systems.

- **GEOTEC® range:** GEOTEC® S fire-resistant boards, available in thicknesses of 30 or 45 mm, allows for quick and easy installation of your vertical or horizontal **EI 60 and EI 120 ventilation and smoke extraction ducts**.
- **GEOFLAM® range:** GEOFLAM® F-Light 35 mm or GEOFLAM® FX 50 mm fire-resistant boards can be used to make vertical or horizontal **EI 120 and EI 180 ventilation and smoke extraction ducts**.



PASSIVE FIRE PROTECTION SPECIALIST

Passive fire protection is a mandatory preventive measure in public buildings, subject to strict rules regarding the construction of premises.

Building components with fire-resistant and fire-retardant properties must be used in the design and construction of public buildings, industrial buildings, and high-rise buildings.



YOUR PRODUCER OF FIRE PROTECTION PRODUCTS FOR

- 🔥 Installation of vertical and horizontal ventilation and smoke extraction ducts
- 🔥 Protection of carbon reinforcement under concrete slabs or beams
- 🔥 Technical duct enclosures: protection of electrical cable trays, protection of gas pipes, medical fluids, etc.
- 🔥 The supply of fire access hatches for installation on our technical ducts, solid walls, or partitions.

EI 60
EI 120
EI 180
EI 240



A1 - EN - 13501-1



SMOKE EXTRACTION



VENTILATION



ENCLOSURES



CARBON REINFORCEMENTS

Headquarters :
6 bis rue Jacques Kellner
95150 Taverny

Phone : +33(0)1 30 26 37 00
Email : com@geostaff.fr

Visit our website: www.geostaff.fr
Find us on LinkedIn: scan this QR code



QUALITY AND ENVIRONMENTAL APPROACH

Tested in certified laboratories such as EFACTIS, our solutions are designed to comply with the most stringent European standards in terms of passive fire protection. Geostaff manufactures its products in France using French materials and raw materials sourced from French quarries.



CE MARKING

The CE marking certifies that our products comply with the standards imposed by the European Union.

CLASS A+

VOC emissions in indoor air. The A+ label indicates a very low level of volatile organic compound emissions into the air.

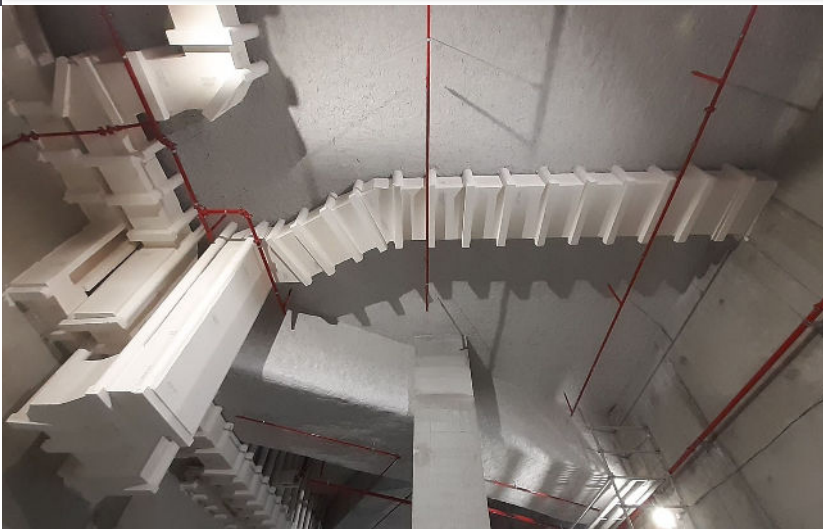
EXCELL GREEN ZONE

The Excell Zone Verte label allows for the control of all products or materials used in the construction and/or renovation of buildings, both in terms of toxicology and organoleptic properties. The label guarantees the use of high-quality products that are compatible with the indoor air quality of living spaces, HQE (High Environmental Quality) housing, and food industry premises intended to store sensitive foodstuffs.

ECOBAN

Our GEOTEC® S and GEOTEC® SX boards satisfy the highest ecobau and Minergie-ECO requirements in the areas of ecology and health and are classified in the eco1 category. The ecobau platform was created in 2005 to promote environmentally friendly construction.

OUR FIRE-RESISTANT PROJECTS



TOUR TO-LYON & HÔTEL

- 🔥 GEOTEC® S45 2-hour fire-resistant boards
- 🔥 Smoke extraction
- 🔥 Ventilation
- 🔥 Protection



GEOPRO CALCULATION TOOL



Easily integrate our solutions into your designs using BIM REVIT.

With the help of **BIMIFY** we have developed software that makes it easy to incorporate our solutions into your designs and plans. Architects, design offices, and large installers, this new tool will simplify your work!

GeoPro is a costing tool for all your fire protection projects. It has been developed specifically for our customers, enabling them to download a detailed PDF specification of their exact material requirements, down to the last nut and bolt, simply by entering a few details.

Already used by hundreds of our customers, the **GeoPro costing** tool has proven its worth.

It will enable you to work faster, improve the management of your project costs, and thus **facilitate the overall management of all your fire protection projects.**



TECHNICAL SUPPORT

Our engineers and passive fire protection specialists are at your service to find the best certified solution for your project.

Please feel free to contact us directly by phone or email.

Check out our documentation

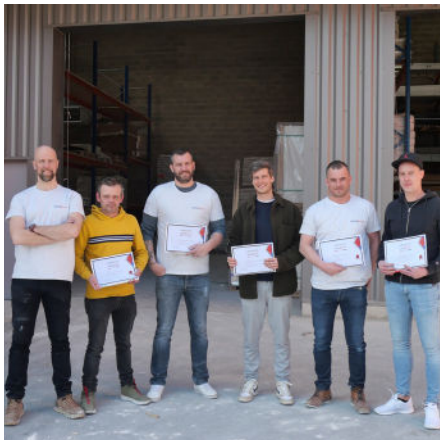
Find all our installation solutions for smoke extraction and ventilation, our catalogs, technical data sheets, and other technical documents on our website. Scan this QR code to access them directly.



TOUR HEKLA

- 🔥 GEOFLAM® F-Light 35 2-hour fire-resistant boards
- 🔥 Smoke extraction
- 🔥 Ventilation
- 🔥 Protection

GEOSTAFF ACADEMY We train you!



This year, our team is offering training sessions directly at our premises in Taverny. Our technicians and sales representatives will provide you with a full day of training on the installation of ventilation ducts and smoke extraction ducts. Contact us for more information!